



**Pacific Panel Cleaners LLC**  
solar cleaning and maintenance



General Procedures on How to Shut Down your PV system and parts of a system – every system is different, and we will not be able to show everyone there system but this is a general information guide.

We do not know everyone's exact location and system type, but most are in this document- the disconnects should be next to your HECO meter

If you have an SMA inverter here would be the area you want to turn to the off position.



*Figure 1 turn the handle to the off position and you will see the lights blink then go dark – handle is circled in yellow the lights circled in green*

If you have a Solar Edge Inverter



*Figure 2 Turn the handle to the off-position handle is circled in yellow*

You may not have a central inverter and have something that looks like this



*Figure 3 you will see a unit with a handle it is called a knife edge handle- this is circled in yellow now you want to make sure it is for your PV system as it should be labeled and state.*

It will have something that looks like this



*Figure 4 see is says customer generator system disconnect*

It may also have something that states



*Figure 5 this is all showing you it is part of your PV system*

May also state photovoltaic AC disconnect

# Solar Labeling Requirements

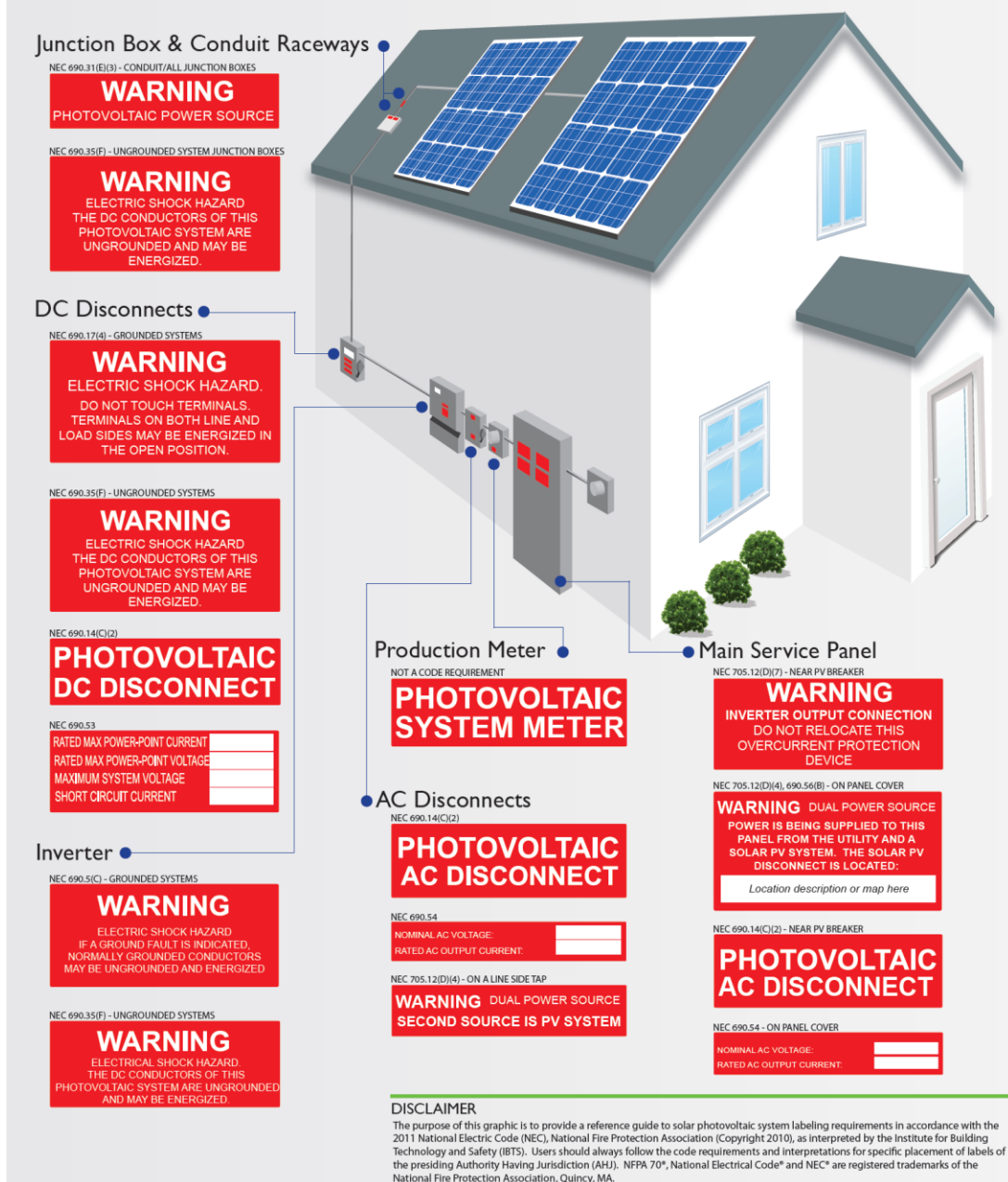


Figure 6 Labeling requirements

Figure 6 should show you where the basic system components are and what should be labeled- we do know that not all systems were labeled per the code but the diagram above should be helpful.

# DC SWITCH



At the bottom of the inverter”

1. When turning system ON DC switch handle should be at I position (12 O’CLOCK)
2. When turning system OFF DC switch handle should be at OFF position (9 O’CLOCK)

*Figure 7 this is for Fronius inverters*





*Figure 8 Advanced Energy PV power*

DC disconnect

AC disconnect

Shut off the DC side first then the AC side



*Figure 9 Solectria inverters the handles are on the left and right side – Same thing shut the DC side down first then the AC side*

We know all systems are slightly different, but this is a general guide- If you do not know where your items are you should be able to have it from your installation guide from your installer, but we wanted to just help as best as we can as we are here to help protect your solar investment

If you look at one of our reports, we usually have a picture of your system disconnects as well.

Now don't remember to turn it on after the storm passes and as with other equipment on your house if you lose power make sure to shut everything off so when power comes back on we do not surge the grid

Be safe and thank you for letting Pacific Panel Cleaners LLC help protect your solar investment